

1st Style Italiano Endodontics

International Congress in Greece

Feasible, Teachable, Repeatable

Retreatments

OCTOBER 2022



15-16



THE MET, **THESSALONIKI**



www.rtx2022.com



#rtx2022

CONGRESS SECRETARIAT

Everest Travel & Congresses

Lykourgou 14-16, 10552, Athens

T. +302103249242

E. conference@everesttravel.gr

W. www.everesttravel.gr



OCTOBER 2022



15-16



THE MET, THESSALONIKI

1st Style Italiano Endodontics

International Congress in Greece

Feasible, Teachable, Repeatable

Retreatments

PRESIDENT'S INVITATION

Welcome to the **1st Style Italiano Endodontics International Congress** in **Greece**.

Style Italiano Endodontics (SIE) with its 200K+ members is currently the biggest group of dentists in the world of social media. Given the strong brand name and the wide acceptance by the public, every where the SIE holds an educational activity people want to attend. After two years of lack of physical presence dentists are more than willing to start attending courses in order to improve their clinical and theoretical skills.

This time its Greece's and the beautiful city of **Thessaloniki's** turn to host the event of the year.

23 lecturers from around the globe, gold and silver members of Style Italiano Endodontics and professors of Universities along with top notch clinicians are going to share their knowledge and clinical expertise to more than **400 participants** in a two days Endodontic mega event.

The main theme of the Congress is going to be about Endodontic Retreatment. With 22 lectures, all aspects of this subject, from diagnosis to permanent restoration are going to be covered thoroughly. The philosophy the group is "feasible, teachable, repeatable". In addition to the scientific program, 7 Hands on Courses and a number of rotary instruments courses, will give the chance to the participants to improve their clinical skills and to interact with key opinion leaders ensuring that they will return on Monday to their offices wiser and even more eager to perform high end endodontic treatments and retreatments.

The congress is going to be hybrid as well, offering the chance to a limitless number of participants from around the world to digitally attend. Moreover, there will be the possibility of on demand viewing for both the on line and the on-site participants, thus maximizing the attendance of the practical courses.

In order to ensure the sponsors spend valuable time with the dentists, coffee breaks and light lunches of 60 minutes have been scheduled in between the lectures. The coffee bar of the convention center of the hotel is going to be open throughout the meeting too. All of the sponsors will be invited to the pre-dinner cocktail party and those willing to attend the dinner party will have to book their seat via the congress secretariat. Both social events will take place in the same venue with the congress.

Dr Konstantinos Kalogeropoulos

President

OCTOBER 2022

15-16

THE MET, THESSALONIKI

1st Style Italiano Endodontics

International Congress in Greece

Feasible, Teachable, Repeatable

Retreatments

GENERAL INFORMATION

DATE	15-16 October 2022
LOCATION	Thessaloniki , Greece
SPONSOR ENQUIRIES	Nikos Tsakonas sponsorships@everesttravel.gr +306936123475
CONGRESS WEBSITE	www.rtx2022.com
VENUE NAME	THE MET
CONFERENCE VENUE WEBSITE	www.themethotel.gr
FB page	style italiano endodontics
Instagram Page	style italiano endodontics



VENUE LOCATION

The MET HOTEL experience in Thessaloniki

In the vibrant city of Thessaloniki, where history and art constantly inform a forward-thinking business culture, THE MET HOTEL, a distinguished member of Design Hotels, offers discerning corporate and leisure travelers a sophisticated and inspiring metropolitan experience.

Conveniently located in the new harbor area, one of the city's most lively quarters, and within easy reach of the monument-studded city center, THE MET HOTEL is an ideal choice.

Your unique experience awaits!



THE MET

48, 26 Oktovriou Str.
546 27
Thessaloniki - Greece

www.themethotel.gr



MAIN TOPICS

1

Epidemiology of the post treatment disease and case selection

2

Diagnostic procedures for endodontic failure

3

Techniques for removing intracanal obstructions

4

Disinfection and final obturation of the root canal system

5

Management of complications

6

Endodontic surgery and re-surgery

7

Restoration of the endodontically retreated tooth

8

Tooth or implant dilemma and future directions



1st Style Italiano Endodontics

International Congress in Greece

Feasible, Teachable, Repeatable

Retreatments

Organizer

Style Italiano Endodontics

Organizing Committee



Dr Konstantinos Kalogeropoulos
President



Prof Kosmas Tolidis
Vice President



Prof Fabio Gorni



Dr Filippo Cardinalli



Dr Ricardo Tonini

INVITED SPEAKERS



ALTAKI ZAHER



BAJAJ AJAY



BERTANI PIO



CARDINALI FILIPPO



CERUTTI FRANCESCA



FLORATOS SPYROS



GORNI FABIO



KALOGEROPOULOS KONSTANTINOS



APOSTOLAKIS DIMITRIOS



BELTES CHARIS



BOUSIOUKIS CHRISTOS



CASSAI ENRICO



CHANIOTIS ANTONIS



GLIGA ALEXANDRU



KARAS BARTLOMIEJ



KOUROS PANTELIS



MAGKOS SOTIRIOS



MIROVIC IVAN



PANAJOTU RISTO



PODDAR GARIMA



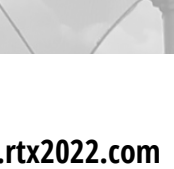
SHABANI FITIM



SHAWKY AHMED



TOLIDIS KOSMAS



TONINI RICCARDO



TSAGKARAKIS ANDREAS



TSOMPANIDES GEORGIOS



TZANETAKIS GEORGIOS



ZAAFRANY MOHAMAD

CONGRESS PROGRAMME

SAT | 15 OCTOBER



OCTOBER 2022

15-16

THE MET, THESSALONIKI

www.rtx2022.com

#rtx2022

1st Style Italiano Endodontics

International Congress in Greece

Feasible, Teachable, Repeatable

Retreatments

MAISTROS A

MAISTROS B

ZEPHYROS

08.00-09.00

REGISTRATIONS

09.00-10.00

Tzanetakis G.

Case selection in retreatment. When to extract, when to treat and when to refer

Cerutti F.

Failures in Endodontics: An epidemiological and clinical analysis

ZUMAX

Poddar G.

The role of magnification in predictable retreatment

10.00-11.00

Apostolakis D.

CBCT radiological studies in endodontics: The facts about artifacts

Gliga A.

Diagnostic procedures for endodontic failure: Clinical and radiological examinations useful for identifying periapical lesions

WOODPECKER

Bajaj A.

Ultrasonics in Endodontics, a must in daily practice

11.00-11.30

Q & A

11.30-12.00

COFFEE BREAK

12.00-13.00

Cassai E.

Clinical procedures for accessing the endodontic space: Techniques for removing all kinds of intracanal obstructions in the retreatment process

Zafrany M.

Clinical procedures for accessing the endodontic space: Techniques for removing all kinds of coronal obstructions in the retreatment process

EIGHTEETH

Cardinali F.

Deep cleaning and 3D obturation in the daily practice: how to increase the therapy quality working with ergonomic devices

13.00-14.00

Altaki Z.

Separated Instrument removal with minimal dental structure loss

Tonini R.

Endoperiodontal lesions and perforations. Communication between the endodontium and the periodontium: anatomical pathways and iatrogenic errors

COLTENE

Tsivos B.

Hyflex for advanced users. Management of excessive curvatures, Retreatment, Hybridisation of files

14.00-14.30

Q & A

14.30-15.00

LIGHT LUNCH

15.00-16.00

Cardinali F.

Filling methods in retreatment: traditional and alternative techniques for sealing the endodontic space

Boutsioukis C.

A critical view on root canal disinfection protocols during orthograde retreatment

DENTSPLY

Beltes C.

The endo challenge: From rotary to the ultimate solution

16.00-17.00

Gorni F.

Surgical endodontics. An alternative approach for the treatment of periapical diseases

Floratos S.

Surgical endodontic re-surgery: Is there room for one more try?

MICROMEGA

Bajaj A.

Management of curved canals: newer techniques

17.00-17.30

Q & A

19.00-21.00

APEROL SPRITZ COCKTAIL PARTY

21.00-23.00

GALA DINNER

CONGRESS PROGRAMME

SUN | 16 OCTOBER



OCTOBER 2022

15-16

THE MET, THESSALONIKI

www.rtx2022.com

#rtx2022

1st Style Italiano Endodontics

International Congress in Greece

Feasible, Teachable, Repeatable

Retreatments

MAISTROS A

MAISTROS B

ZEPHYROS

09.00-10.00

Chaniotis A.

When root canals want to play difficult: by-passing ledges and separated instruments

Altaki Z.

When root canals want to play difficult: scouting calcified canals

FANTA

Zafrany M.

How to avoid and manage canal ledges

10.00-11.00

Tolidis K.

Restoration of the cracked tooth: How modern materials give teeth another chance

Shabani F.

Restoration of the endodontically retreated tooth: Peculiarities and operating techniques

UNICON

Kouros P.

Indirect restorations of compromised teeth

11.00-11.30

Q & A

11.30-12.00

COFFEE BREAK

12.00-13.00

Karas B.

Debunking the myth of the elusive MB2 root canal

Panayotu R.

Post-retreatment phase: a guided plan. Temporal evolution of therapies: evaluation tools and methods

KERR

Magkos S.

Improve your skills using modern rotary files in minimally invasive Endodontics

13.00-14.00

Tsivos B.

Retreatment in the 21st Century: The future is now

Bertani P.

Tooth or implant: criteria for solving the dilemma. Clinical indications and operating procedures for post-extraction implant placement

PLANMECA

Tsagkarakis A.

Digital surgical guide: the standard of care in our daily practice

14.00-14.30

Q & A

14.30-14.45

CLOSING CEREMONY

CONGRESS WORKSHOPS

SAT | 15 OCTOBER



OCTOBER 2022

15-16

THE MET, THESSALONIKI

www.rtx2022.com

#rtx2022

1st Style Italiano Endodontics

International Congress in Greece

Feasible, Teachable, Repeatable

Retreatments

OSTRIA A

OSTRIA B

LEVANTE

SIROCCO

09.00-11.00

FANTA

Zafrany M.

Shaping essentials: The ultimate guide for safe root canal instrumentation

ORODECA

Tsompanidis G.

Shaping strategies with the Orodeka Plex V files: a clinician's guide to excellence and safety

DENTSPLY

Beltes C.

Protaper Ultimate, the ultimate solution for shaping the root canals

12.00-14.00

ZUMAX

Poddar G.

Beginner's guide to using the Dental Operating Microscope

11.30-14.30

WOODPECKER

Bajaj A.

Hedge the ledge! Ledge management with the T mode technique

PERFECT ENDO

Gluga A.

A Perfect way to approach a primary root canal treatment

PLANMECA

Apostolakis D.

CBCT masterclass

15.00-17.00

GROUP 1

Altaki Z., Karas B.

Separated Instrument removal with minimal dental structure loss

ANGELUS - GROUP 1

Tonini R., Gluga A.

MasterMTA

COLTENE

Tsivos B.

Hyflex for advanced users. Management of excessive curvatures, Retreatment, Hybridisation of files

15.00-16.30

3M

Presentation of a novel concept

17.00-19.00

GROUP 2

Altaki Z., Karas B.

Separated Instrument removal with minimal dental structure loss

ANGELUS - GROUP 2

Tonini R., Gluga A.

MasterMTA

COLTENE

Chaniotis A.

Hyflex EDM & Remover

16.30-18.00

3M

Presentation of a novel concept

CONGRESS WORKSHOPS

SUN | 16 OCTOBER



OCTOBER 2022

15-16

THE MET, THESSALONIKI

www.rtx2022.com

#rtx2022

1st Style Italiano Endodontics

International Congress in Greece

Feasible, Teachable, Repeatable

Retreatments

OSTRIA A

09.00-11.30

ACTEON

Gorni F., Kalogeropoulos K.

Surgical retreatment in 2022

12.00-14.00

EIGHTEETH

Cardinali F., Mirovic I.

Mastering warm vertical compaction

14.30-16.30

EIGHTEETH

Cardinali F., Panayotu R.

The post that cannot be removed has yet to be placed: ultrasonic techniques for removing intracoronal posts

OSTRIA B

09.00-11.00

MICROMEGA

Bajaj A.

Modern reciprocation preparations for routine and challenging cases

DENTSPLY - GROUP 1

Cassai E., Shabani F.

Mastering the removal of gutta-percha with Reciproc

DENTSPLY - GROUP 2

Cassai E., Shabani F.

Mastering the removal of gutta-percha with Reciproc

LEVANTE

SADENT

Magkos S.

Dealing with complex Endo cases with Kerr Endo rotary files

UNICON

Kouros P.

Indirect restorations of compromised teeth

ULTRADENT

Tolidis K.

Fiber reinforced composite restorations

SIROCCO

14.30-17.30

PLANMECA

Tsagkarakis A.

Demystifying the procedure of the in house fabricated surgical guides

Retreatments

SPONSORS

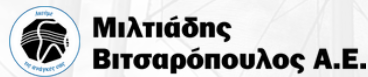
DIAMOND



PLATINUM



GOLD



SILVER





Η εταιρεία ΟΔΟΝΤΙΑΤΡΙΚΑ ΑΠΟΣΤΟΛΙΔΗ ιδρύθηκε το 1929 στη Θεσσαλονίκη. Ξεκίνησε ως ένα κατάστημα λιανικής πώλησης οδοντιατρικών προϊόντων, με πελάτες κυρίως στη Βόρεια Ελλάδα. Μέσα σε μικρό χρονικό διάστημα κέρδισε την εμπιστοσύνη των πελατών της, με κεντρικό άξονα επιτυχίας την πώληση προϊόντων πρώτης ποιότητας. Σύντομα, η εταιρεία επέκτεινε τις δραστηριότητές της σε όλη την ελληνική επικράτεια και εκτός Ελληνικών συνόρων.

Σήμερα, με οδηγό την εννενητάχρονη και πλέον εμπειρία ως πρωτοπόρου στον οδοντιατρικό χώρο και με καταστήματα στην Αθήνα και στη Θεσσαλονίκη, καινοτομούν, προσφέρουν και υπηρετούν τον οδοντιατρικό χώρο με ένα δίκτυο πωλήσεων, εκπαιδευτικών σεμιναρίων και service. Η εταιρεία ΟΔΟΝΤΙΑΤΡΙΚΑ ΑΠΟΣΤΟΛΙΔΗ αντιπροσωπεύει μεγάλους οίκους του εξωτερικού όπως:

- Planmeca, Φινλανδία
- Newtom, Ιταλία
- Kulzer, Γερμανία
- EMS S.A., Ελβετία
- Acteon Group-Satelec, Γαλλία
- J&J, σειρά Listerine
- LM, Φινλανδία
- Score, Ολλανδία

Με σεβασμό στους πελάτες μας και στη δέσμευση μας για παροχή άριστης ποιότητας προϊόντων και εξοπλισμού, τα ΟΔΟΝΤΙΑΤΡΙΚΑ ΑΠΟΣΤΟΛΙΔΗ έχουν τη χαρά και την τιμή να επισφραγίσουν τρεις νέες αποκλειστικές συμφωνίες με μεγάλους οίκους του εξωτερικού:

- Formlabs, ΗΠΑ
- Orascopic, ΗΠΑ
- Futudent, Φινλανδία

Retreatments

COLTENE

MicroMega

COLTENE is a global leader in the development, manufacture and sale of consumables and small-size equipment for dental treatment applications. The Dental Group offers a wide range of products, encompassing six segments – solutions for almost all dental treatments. The complete endodontology programme includes root canal preparation with files and rinsing solutions, obturation and post systems. The next extensive range is centred entirely on restorative filling therapy. This particularly includes temporary and permanent filling materials, as well as adhesive systems and polymerisation lamps. Prosthetics represents a further main area. It includes a wide spectrum of condensation and addition cross-linking impression materials. The segments of treatment aids, infection control and rotating instruments round off the programme.

COLTENE never loses sight of the health and well-being of the patient as it harnesses the power of digitalization. Numerous digitalization projects in the areas of product innovation, supply chain, business development, organizational optimization and the optimization of dental tools and equipment are under way to make process workflows and dental treatments simpler, safer and cheaper.

An extra in creativity and service has always been our aspiration at COLTENE: we call it “Upgrade Dentistry” – or “Better Quality. Better Reliability. Better Practice”.

UNICON HELLAS

Unicon Hellas is one of the leading dental suppliers in the Greek market, and it is offering dental and laboratory solutions specially adapted to our client's requirements combined with high level services. Quality is what defines us in the eyes of our customers and this philosophy is what we want to maintain in the future.

The company was established in 2012 and fourteen (14) dental stores consist of Unicon today, being able to serve its clients directly to almost the whole Greek territory. It is staffed by a team of experienced associates with over 30 years of presence in the dental market.

In recent years, the company has invested in the participation and organization of advanced seminars with the necessary equipment and personnel, in order to bring the advances of dentistry closer to our customers, with a focus on the best possible dental care. Unicon Hellas has exclusive distribution in Greece some of the leading manufacturers of dental products worldwide. Among them are Shofu, Tokuyama, Woodpecker, CJ-Optik, Angelus, Morita, Orodeka, Diadent, Jota, Alpro, OCC, Redon, Vannini, MDC and more.

1st Style Italiano Endodontics

International Congress in Greece

Feasible, Teachable, Repeatable

Retreatments

zumax

ZUMAX means the maximum of the optical zoom, which can help the clinical doctors surpass their visual limits, Beyond Vision. and well serve "Fine Dentistry", the main theme of the clinical stomatology in the 21st Century.

Founded in 2005, Zumax is a professional manufacturer of medical & optical equipment. Located in the Suzhou New District, Zumax has a registered capital of 40 million RMB, and has been awarded as the National High-tech Enterprise and the Innovation Pioneering Enterprise of Suzhou in 2013.

The products of Zumax cover various fields such as dental, ophthalmic, otorhinolaryngology, head and neck surgery and community & general medical practice.

Zumax owns rich industry experience and know-how in the R&D and manufacturing of Medical optical devices and a world view as well as sustainable capabilities in the scientific and technological innovation.

Adhering to the marketing concept of Winning the Customers with Qualities and Retaining the Customers with Services, ZUMAX makes great efforts to create values for our customers with our products and services. Our marketing and sales staffs are required to provide solutions to the customers to meet their demands on technical services; they are expected to serve every customer with great loyalty.

We ask our agents in various countries of Europe and America to come to ZUMAX's factory at a regular basis and accept systematic trainings on technologies; we set such request as a pre-condition for being granted a sales agency. Meanwhile, we make use of each exhibition abroad to visit the local and nearby agents, seizing the opportunities to provide the trainings on the technical service for our products, so as to increase the satisfaction of every customer of ZUMAX.

Till to now all the five authoritative institutions and universities representing the top levels of clinical application, teaching and research of dentistry in China have become the customers of Zumax, and our customers of various levels of dental hospitals, general hospitals and private dental clinics are countless. In the face of fierce competition in the global dental microscope market, with its international first-class quality and good services, Zumax has confidence in taking the main share in the future market.

OCTOBER 2022

15-16



THE MET, THESSALONIKI



www.rtx2022.com



#rtx2022



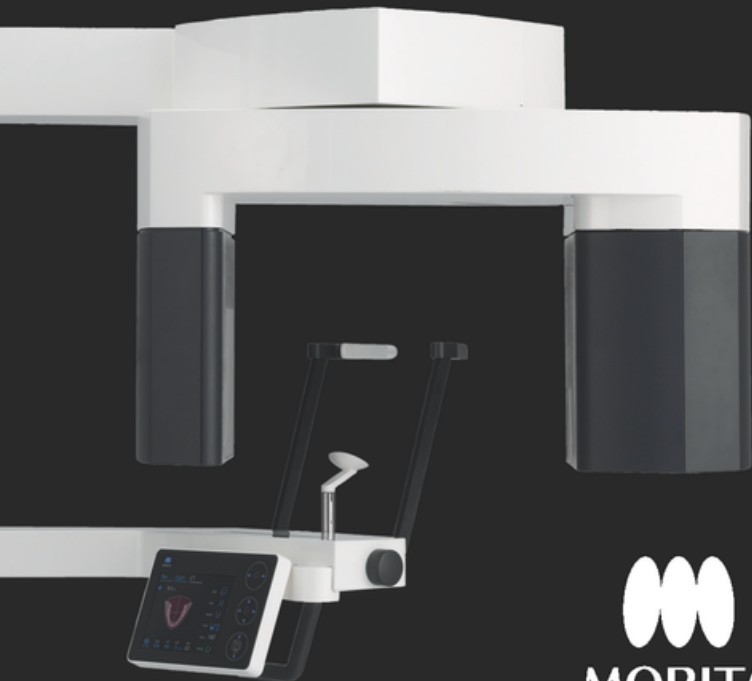
Since
2016

EIGH -TEETH

Changzhou Sifary Medical Technology co.,Ltd

was founded in 2016. Sifary is our company name while Eighteeth is our brand name. Eighteeth takes only years to become a forefront in the dental devices provider. Because of innovative products and reasonable marketing strategy with good quality control, in less than 4 years, Eighteeth develops a strong sales network with exclusive dealers in more than 130 countries, establishes a professional and international KOL team. Eighteeth dental products are recommended by many professional dentists all over the world. We are determined to let domestic and foreign dentists and patients enjoy better products and services.






MORITA

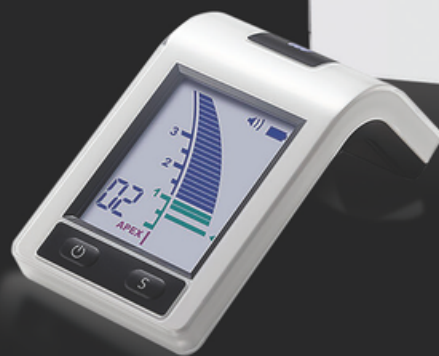
 **OPTIK**
Mikroskope in Medizin & Technik



 **WOODPECKER**



 **ORODEKA**



UNiCON
HELLAS

www.uniconhellas.gr - 2104828020



EYEZOOM™

Η ημέρα σας είναι μεταβαλλόμενη. Το ίδιο θα πρέπει να είναι και οι λούπες σας.

Η πρώτη στον κόσμο 3-σε-1 μεγεθυντική λούπα EyeZoom™ διαθέτει επίπεδα μεγέθυνσης που κυμαίνονται από 3x-5x.

Εξατομικευμένες λούπες σε κάθε χρήστη !

 **ORASCOPTIC™**



ΑΘΗΝΑ
ΦΕΙΔΙΠΠΙΔΟΥ 23, 115 27 ΓΟΥΔΗ
Τ 210 69 84 882
info@apostolides.gr

ΘΕΣΣΑΛΟΝΙΚΗ
ΤΕΛΛΟΓΛΟΥ 11, ΤΚ 546 36
Τ 2310 201 301, 2310 248 065
info@apostolides.gr

 **ΟΔΟΝΤΙΑΤΡΙΚΑ**
ΑΠΟΣΤΟΛΙΔΗ από το 1929

Για όσους έχουν υψηλές απαιτήσεις

CanalPro™ Jeni

Σύστημα ψηφιακής υποβοήθησης για παρασκευή ριζικού σωλήνα

Jeni - έτοιμοι - πάμε!



Ταιριάζει απόλυτα με τα συστήματά μας.

Τέσσερα συστήματα ρινών NiTi είναι εκ των προτέρων προγραμματισμένα ειδικά για χρήση στο Jeni-Move. Χάρη στη λειτουργία Doctor's Choice, είναι επίσης δυνατή η ευέλικτη χρήση με μεμονωμένες αλληλουχίες ρινών.

HyFlex™ CM



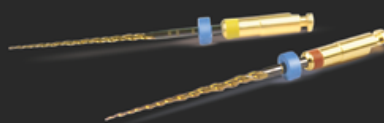
MicroMega One Curve



HyFlex™ EDM



MicroMega 2Shape



www.coltene.com

COLTENE

zumax



OMS3200 R2/PRO Dental Microscope

***PRECISION MEDICINE,
THE FUTURE AT YOUR FINGERTIPS.***



MAILLEFER

ProTaper Ultimate™

**+
WE
KNOW
ENDO.**

Performance Unlimited

A solution combining the latest generation of ProTaper files, enhanced disinfection and dedicated obturation that works seamlessly together.

New

AH Plus® Bioceramic Sealer

Integrated part of ProTaper Ultimate solution

- high washout resistance
- 60% faster set time ¹
- 25% more radiopacity ¹



¹data on file, compared to EndoSequence® BC Sealer™, TotalFill® BC Sealer™, EdgeBioCeramic™ Sealer.

THE DENTAL
SOLUTIONS
COMPANY™

**Dentsply
Sirona**

RetroMTA®

Βιοκεραμικό υλικό
για επιδιόρθωση ρίζας
και θεραπεία ζωντανού πολφού.



ΕΝΔΕΙΞΕΙΣ

- Επιδιόρθωση διάτρησης στο μυλικό τριτημόριο της ρίζας και μεσορριζικά
- Εξωτερική απορρόφηση ρίζας
- Ανάστροφη έμφραξη
- Αναφύτευση δοντιού
- Κάλυψη πολφού
- Πολυτομή
- Πολυεκτομή
- Ουδέτερο στρώμα
- Υλικό βάσης

ΧΑΡΑΚΤΗΡΙΣΤΙΚΑ

- Εξαιρετική δυνατότητα έμφραξης
- Υψηλή αντιβακτηριακή δράση
- Κανέναν αποχρωματισμό
- Καθόλου βαρέα μέταλλα
- Χρόνος πήξης: 180 δευτερόλεπτα
- Χρώμα: λευκό

OrthoMTA®

Βιοκεραμικό υλικό
για επιδιόρθωση ρίζας
και έμφραξη ριζικού σωλήνα.



ΕΝΔΕΙΞΕΙΣ

- Επιδιόρθωση διάτρησης στο ακρορριζικό τριτημόριο
- Ρωγμές
- Διαχωρισμός ρίνης εντός του ριζικού σωλήνα
- Εσωτερική απορρόφηση ρίζας
- Ακρορριζιογένεση
- Προκλητή απόφραξη ακρορριζίου
- Έμφραξη του ριζικού σωλήνα

ΧΑΡΑΚΤΗΡΙΣΤΙΚΑ

- Εξαιρετική εμφρακτική ικανότητα
- Αντιβακτηριακή δράση
- Καθόλου διαστολή (0,09%)
- Καθόλου βαρέα μέταλλα
- Αρχική πήξη: 180 λεπτά
- Χρώμα: λευκό



**Μιλτιάδης
Βιτσαρόπουλος Α.Ε.**

ΚΕΝΤΡΙΚΑ

Μεσογείων 348, 153 41 Αγ. Παρασκευή, Αθήνα
Τηλ: 210 65 41 340, Fax: 210 65 41 618
e-mail: info@vitsaropoulos.gr

www.vitsaropoulos.gr www.facebook.com/vitsaropoulos

ΥΠΟΚΑΤΑΣΤΗΜΑ

Φειδιππίδου 55, 115 27 Γουδή
Τηλ: 210 77 95 747



Kerr™
ENDODONTICS

ZenFlex™

Το νέο εργαλείο, σχεδιασμένο και δοκιμασμένο για εσάς από μερικούς από τους καλύτερους ενδοδοντολόγους στον κόσμο



SADENT
www.sadent.com

ΠΑΙΑΝΙΑ: 1 χλμ Λεώφ.Μαρκοπούλου, ΤΚ: 190 02, Τηλ: 211 10.22.900
ΓΟΥΔΗ: Τετραπόλεως 4-8, Τηλ.: 211 10.22.900, 210 77.77.608
ΘΕΣΣΑΛΟΝΙΚΗ: Ν. Τέλογλου 5, Τ.Κ.: 546 36 • Τηλ. 2310 968.799
e-mail: info@sadent.com